

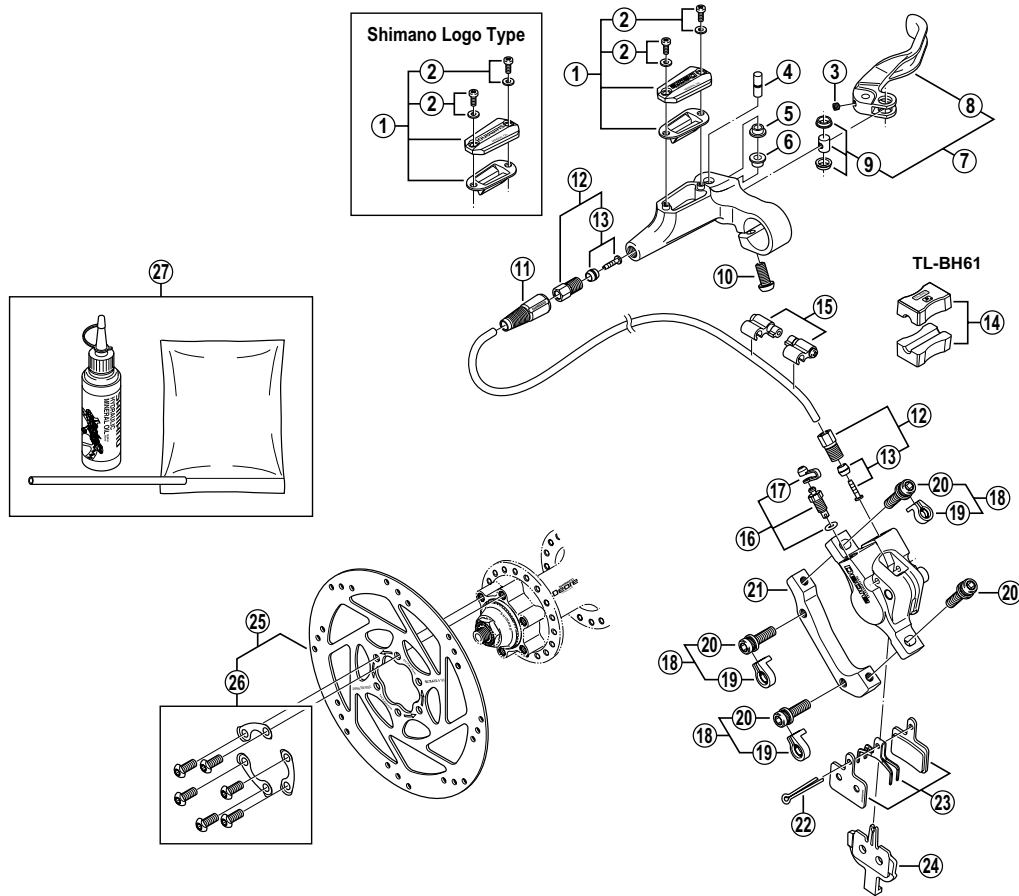
SHIMANO DEORE Rear Disc Brake

BR-M525 Brake Caliper
BL-M525 Brake Lever

SM-RT60 Disc Rotor
SM-BH59 Brake Hose

SM-DB-OIL Mineral Oil
SM-HANG Hose Supporter

2002



ITEM NO.	SHIMANO CODE NO.	DESCRIPTION	INTERCHANGEABILITY	
1	Y-8S4 98030	R.H. Lid Unit		
	Y-8S4 98040	R.H. Lid Unit (Shimano Logo Type)		
2	Y-8SZ 98020	Lid Fixing Screw (M3 x 8) & Washer	A	
3	Y-8SZ 07000	Lever Axle Fixing Bolt	A	
4	Y-8SZ 06000	Lever Axle	A	
5	Y-8SZ 03000	Lever Axle Bush A	A	
6	Y-8SZ 04000	Lever Axle Bush B	A	
7	Y-8S4 98050	Lever Unit	B	
8	Y-8SZ 05010	Lever Member	B	
9	Y-8S4 98060	Reach Adjusting Boss & Bush		
10	Y-8SB 10000	Clamp Bolt (M6 x 14.8)	A	
11	Y-8H2 03000	Cover		
12	Y-8H2 98010	Connecting Bolt Unit		
13	Y-8H2 98020	Olive & Connecting Insert		
14	Y-8H1 98030	TL-BH61 Special Tool (2 pcs.)		
15	Y-830 98040	Hose Supporter A & B		
16	Y-8C5 98010	Bleed Nipple Unit		
17	Y-8B2 14000	Bleed Nipple Cap	A	
18	Y-8C4 98010	Adapter Fixing Bolt (M6 x 20) & Stop Ring		A
19	Y-8C5 11000	Stop Ring		A
20	Y-8C5 09000	Adapter Fixing Bolt (M6 x 20)		A
21	Y-8C5 18000	Adapter for Rear		
22	Y-8C5 05000	Split Pin		
23	Y-8C5 98020	Pad & Spring		B
24	Y-8C5 15000	Pad Spacer		
25	Y-8HZ 98010	Disc Rotor Unit (φ 160 mm)	A	A
26	Y-818 98030	Disc Rotor Fixing Bolt & Plate	A	A
27	Y-839 98010	Mineral Oil Bleed Kit (50 ml)	A	

A : Same parts.
 B : Parts are usable, but differ in materials, appearance, finish, size, etc.
 Absence of mark indicates non-interchangeability.

0108-2093A

Specifications are subject to change without notice.